

Welcome to Ealing!

Learn

Enjoy

Succeed



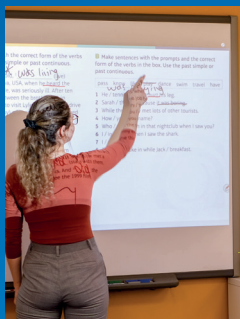
WEST
LONDON
**ENGLISH
SCHOOL**

wles.net



Welcome to WLES

West London English School is a private, family-run, British Council accredited school. We offer the highest quality courses, both face-to-face and online, at affordable prices, with a longstanding reputation for excellent standards of teaching.



Here at WLES, we aim to offer you the opportunity to enjoy a unique language learning experience in a relaxed, friendly and warm environment.

Since 2015, we have provided first-rate English language training in a stimulating and supportive environment.

Our aims as a school are simple and clear:

- All students learn effectively
- All students enjoy an incomparable experience
- All students achieve their goals



In this brochure, you will find information on our school aims and values, our wide range of courses, Ealing and the surrounding area, the fantastic WLES team, our welfare standards and accommodation.



Shaftesbury House,
49 – 51 Uxbridge Road,
Ealing, London,
W5 5SA

General Enquiries:
+44(0)20 3198 1888

E-mail:
info@wles.net

WWW
www.wles.net

If you have any questions, or would like any more information, you can visit our website at **www.wles.net** or send us an email at **info@wles.net**. We are immensely proud of our school, our staff and our students. We love our **international environment** and are proud to be **professional** in everything we do. As a team of truly welcoming, friendly and caring people, we can't wait for you to join our school.

Kind regards,

Asif Musa
Managing Director

Contents

3	Contents
4	About Ealing
5	Online Courses
6	Facts, Figures and Facilities
7	General English
9	General English Timetables
10	Academic IELTS Exam Preparation
12	OET (Occupational English Test) Exam Preparation
15	OET Online: Writing
16	OET Online: Speaking
17	Medical English
18	Cambridge Exam Preparation: B2 First, C1 Advanced, C2 Proficiency*
20	Business English
22	English Conversation class
22	Trinity exam classes
23	Private Tuition
24	Saturday Junior School
25	Junior Summer School
27	STEM
28	Junior Social Programme
29	Level Descriptors
30	Welfare
31	Find out more
33	Getting to WLES
34	Booking notes
35	Irregular verbs

About Ealing

Ealing is located in the heart of West London and is the third largest London borough. Ealing Broadway has all the advantages of a small town with a great community atmosphere and local businesses, but all the benefits of being close to the centre of London, with excellent transport links.

Whatever your interests, there is something here for you.

Shopping

At the hub of the borough is the Ealing Broadway shopping centre. With major retailers, global brands and a wide variety of restaurants, it is certain to offer something for everyone. On sunny days, the courtyard is the perfect place to relax with friends.

Close by is also Westfield London with its luxury designer brands, world famous Portobello Road Market, and The London Designer Outlet with at least 30% off everything!

Sports

Ealing has countless local sports clubs: badminton, canoeing, cricket, golf, tennis, football and swimming to name but a few.

There are also many gyms in the area starting from just £14.99 a month.

Outdoors

Home to eight Royal Parks, London boasts so much green space (47% of all land area) that it has officially been recognised as a national forest, the world's first "National Park City."

Walpole Park is on the doorstep of WLES. It is a registered English Heritage site, and home to Pitzhanger Manor and Gallery, which has stood on the grounds for over 200 years.

Culture and History

Here in Ealing we are proud to boast our festivals (comedy, blues and jazz to name but a few) and Pitzhanger Manor. The manor was recently re-opened to the public and has been restored to its original Regency period design, as envisioned by architect and owner Sir John Soane, and also features contemporary art exhibitions.

Food and drink

In Ealing, you can eat around the world! We have independent restaurants offering cuisine from Tunisia, Japan, Spain, Greece, Thailand, Vietnam, Persian, Italy, Poland and more! We also have amazing independent coffee shops like Farm W5 with great organic food and fab coffee, Artisan and Reineta in Dickens Yard.

Central London

We are only 30 minutes away from Central London. Check out the theatre, museums, parks and nightlife. London is the best city for studying, exploring and making unforgettable memories with international friends for life.

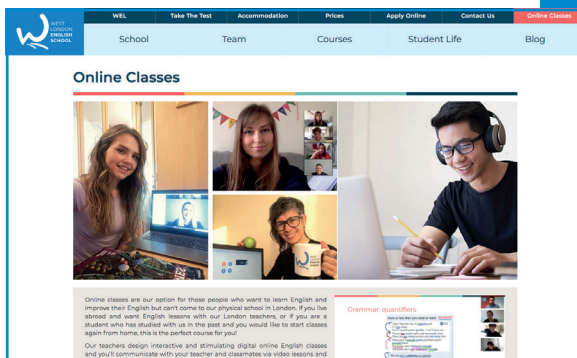


Online courses

You can also join us online. Online classes are our option for those people who want to learn and improve their English but can't come to our physical school in London. If you live in a different part of UK or abroad and want English lessons with our teachers, or if you are a student who has studied with us in the past and you would like to start classes again from home, online courses are perfect for you!

Our teachers design interactive and stimulating digital online English classes and you'll communicate with your teacher and classmates via our online e-learning video platform. Once you sign up for an online course, you will receive your log-in details and can join your classmates via your digital device.

In the class, you will work with other students (usually 2-5 other students) on your speaking, listening, reading and writing skills as well as vocabulary, grammar and pronunciation. Because the classes are learner-centred, you are given the opportunity to practise everything related to language with students from all over the world. Our academic team select relevant and interesting coursebooks to ensure you receive a variety of language input. Your teacher will also give you several recommendations to help improve your English such as YouTube links, news articles to read and other online resources and games.



What are the benefits of online learning?

- Smaller groups compared to face-to-face classes mean more one-to-one time with the teacher
- You can learn from anywhere in the world as long as you have a good internet connection and a device such as laptop or PC, tablet or phone

Our current online courses include*:

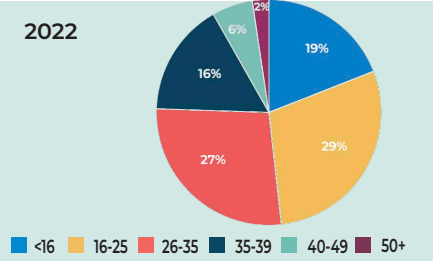
- General English
- Academic IELTS
- OET exam preparation
- Cambridge exams
- Trinity exams (SELT)
- Medical English
- Business English
- Private English Tuition

(*subject to availability)

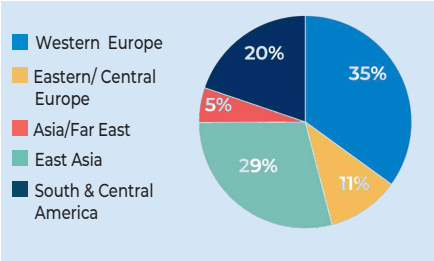
Facts, Figures and Facilities



Ages



Nationalities in 2022



Facilities

- 2 computer suites
- A book-lending library
- Free WiFi
- A kitchen

In July and August, classes can take place in the main building and in additional premises located near the school.

Holidays 2023:

There will be no lessons on the following UK public holidays in 2023:

2 January, 07 April, 10 April, 01 May, 08 May, 29 May, 28 August

The school will be closed from 22 December 2023 to 7 January 2024.

General English



Summary *(This course is available face-to-face and online*.)* *subject to availability

General English is our most popular course. Our teachers design interactive and stimulating classes with clear aims and outcomes.

All our general English classes are based on the communicative approach. This means there is a strong focus on speaking and listening skills, as well as reading, writing, pronunciation, grammar and vocabulary.

Because the classes are learner-centred, you are given the opportunity to practise everything related to language with classmates from all over the world. Our Academic Team select relevant and interesting coursebooks that change each term (12 or 13 weeks for full-time courses and 25 weeks for part-time courses) to ensure you receive a variety of language input.

Key Facts

- English level: A1 –C2*
- Minimum age: 16
- Average age: 18-35
- Minimum course length: 1 week
- Start date: any Monday
- Average class size: 8 (maximum 14)

*subject to availability



General English

Course Objectives

- To improve and develop your speaking fluency, accuracy and pronunciation
- To practise listening skills to help you understand and respond to real-life situations
- To increase your vocabulary in a wide range of topics such as holidays, sport, technology, nature, food and drink and transport
- To improve, develop and practise English grammar and gain confidence when using it in writing and in speaking
- To develop reading skills including skim reading and reading for detail
- To learn writing techniques for a range of formal and informal situations
- To learn self-study techniques to help you study independently outside the classroom

Included in your fees:

- Monthly progress tests and progress reports
- Outside the classroom you can use our e-learning platform for extra practice. This starts from your enrolment date and runs for your entire course, plus 3 months after you leave us.
- A combo book - a coursebook and workbook (for an additional reduced fee of £25)
- You can attend Thursday conversation class for a discounted fee
- You can add IELTS afternoon class for a discounted fee (if you are in B2 or above)
- A certificate of completion

General English Timetables

General English Mornings

	Monday	Tuesday	Wednesday	Thursday	Friday
9 - 12.00 (15-min break)	✓	✓	✓	✓	✓

3 hours per day, 5 days a week

General English Early afternoons

	Monday	Tuesday	Wednesday	Thursday	Friday
12.30 - 15.30 (15-min break)	✓	✓	✓		✓

3 hours per day, 4 days a week

General English Late afternoons

	Monday	Tuesday	Wednesday	Thursday	Friday
16.00-18.30 (10-min break)	✓	✓	✓		✓

2.5 hours per week, 4 days a week

General English Exam Intensive (24/27 hours)

	Monday	Tuesday	Wednesday	Thursday	Friday
9 - 12.00 (15-min break)	✓	✓	✓	✓	✓
12.30 - 15.30 (15-min break)	✓		✓		✓
12.30 - 15.30 (15-min break)	✓	✓	✓		✓

24/27 hours per week, 5 days a week

General English Evenings

	Monday	Tuesday	Wednesday	Thursday	Friday
19:00 - 21:00 (5-min break)		✓		✓	

2 hours per day, 2 days a week

General English Saturdays

	Monday to Friday				Saturday
10:00-13:15 (15-min break)					✓

3 taught hours, 1 day a week

Academic IELTS Exam Preparation



Summary *(This course is available face-to-face and online.)*

IELTS is the right exam for you if:

- you want to study in higher education e.g. university
- you need a certificate for visa purposes
- you need a certificate specifically for your profession

We fully prepare you for the IELTS exam so that you can achieve your target score. Our teachers design the classes to provide you with the essential preparation and practice you need to succeed, with exam strategies and techniques to help you pass each part of the test.

The four parts of the test are:

- Listening
- Writing
- Reading
- Speaking

Our Academic Team selects a variety of interactive and appropriate preparation materials, past exam papers and a range of homework exercises to give you sufficient practice, which will give you confidence in the exam.

Examples of techniques you will learn are:

- Note-taking
- Listening and reading comprehension
- Skimming and scanning texts at high speed
- Writing Academic reports
- Learning academic vocabulary
- Increasing fluency, accuracy and confidence when speaking

Key Facts

- Minimum English level: B2
- Minimum age: 16
- Average age: 25-30
- Minimum course length: 1 week
- Start date: any Monday
- Average class size: 6 (maximum 14)

**subject to availability*

Academic IELTS Exam Preparation

Course Objectives

- To learn and use listening techniques such as note-taking and listening comprehension
- To develop reading skills and techniques for the exam including skimming and scanning texts at high speed, reading for detail, and reading for gist
- To develop writing strategies such as critical analysis, evaluation and giving opinion
- To increase your vocabulary for a range of situations including academic vocabulary for writing Part 1 and 2
- To improve and develop your speaking fluency, accuracy, pronunciation and confidence to succeed in the exam
- To develop and practise English grammar and gain confidence when using it in writing and in speaking
- To learn self-study techniques to help you study independently outside the classroom

Included in your fees:

- Regular test practice that reflects real-life exam atmosphere
- All materials, including materials created by our experienced teachers
- Outside the classroom you can use our e-learning platform for extra practice. This starts from your enrolment date and runs for your entire course, plus 3 months after you leave us
- A certificate of completion

Academic IELTS Exam Preparation Timetable

	Monday	Tuesday	Wednesday	Thursday	Friday
12.45 - 16.00 (15-min break)	✓	✓	✓	✓	✓

3 taught hours per day, 5 days a week

Academic IELTS Intensive Exam Preparation Timetable

	Monday	Tuesday	Wednesday	Thursday	Friday
9 - 12.00 (15-min break)	✓	✓	✓	✓	✓
12.45 - 16.00 (15-min break)	✓	✓	✓	✓	✓

31 hours 15 minutes per week (From £325 per week)

OET (Occupational English Test)

Exam Preparation: face-to-face classes



Summary

West London English School: Premium Preparation Provider

WLES are proud to be an official OET Premium Preparation Course Provider. Our live courses are lead by our teachers and can be taken at our school in London or online via our e-learning platform, WEL.

Our class sizes are kept to a maximum of 8 students per class, ensuring you receive a good amount of support from our expert teachers. In addition to studying in class, you will also receive a number of tasks to complete at home.

Is the OET the right exam for you?

The Occupational English Test (OET) is a test of English for healthcare professionals which is used in the UK, Australia, New Zealand, Singapore and Dubai among others to assess the Medical English skills of medical professionals, including doctors, nurses, midwives and vets.

The OET is widely accepted in the UK by several healthcare organisations, including the **General Medical Council (GMC)** and **Nursing and Midwifery Council (NMC)**.

Please see www.occupationalenglishtest.org for the full range of healthcare boards and councils.

Healthcare professionals require a Grade B in the OET to work in the UK. Grade B is an advanced level of English, equivalent to IELTS band 7 and C1 in the Common European Framework of Reference for Languages (CEFR).

Key Facts

- Minimum English level: B2
- Minimum age: 18
- Average age: 30
- Minimum course length: 1 week
- Average class size: 5 (maximum 8)

**subject to availability*

OET (Occupational English Test) Exam Preparation

Course Objectives

- To learn and use listening techniques such as listening for gist, detail, purpose and opinion for the listening sub-test
- To develop reading skills and techniques for the exam including skimming and scanning texts at high speed, reading for detail, and reading for gist
- To develop letter-writing strategies and exam strategies such as select, organise, transform for the writing sub-test
- To learn techniques for the speaking sub-test and to improve and develop your fluency, accuracy, pronunciation and confidence to succeed in the exam
- To develop and practise advanced English grammar and gain confidence when using it, particularly for the writing sub-test

Included in your fees:

- Strategies to help you complete the four exam papers
- Daily homework and feedback
- Speaking practice with an OET-trained teacher
- Complete mock exams in exam conditions with feedback
- All materials and resources

OET Exam Preparation: 4-week face-to-face class

	Monday	Tuesday	Wednesday	Thursday	Friday
13.00 - 16.30 (30-min break)	✓	✓	✓	✓	✓

15 taught hours per week, 5 days per week

OET Exam Preparation: 1-week intensive

	Monday	Tuesday	Wednesday	Thursday	Friday
09.00 - 12.00 (15-min break)	✓	✓	✓	✓	✓
13.00 - 16.30 (30-min break)					

32 hours 30 minutes per week, 5 days per week

OET (Occupational English Test) Online Exam Preparation Packages



Our online courses are designed to give you the language skills and the test techniques and strategies to help you pass the OET. You can study in your own time and at your own pace.

As an official premium provider, our courses are of a high standard and our teachers are experienced and well-qualified.

Our courses are designed for medical professionals, doctors and nurses, with an upper-intermediate or advanced (B2-C1) level of English.

Silver	Gold	Platinum
1 month's access to live classes	6 months' access to live classes	6 months' access to live classes
4 video lessons - Overview of all 4 sub-tests	20 video lessons - Covering techniques for all 4 sub-tests	20 video lessons - Covering techniques for all 4 sub-tests
4 listening mock tests - With answers and feedback	8 listening mock tests - With answers and feedback	8 listening mock tests - With answers and feedback
4 reading mock tests - With answers and feedback	8 reading mock tests - With answers and feedback	8 reading mock tests - With answers and feedback
2 speaking mock tests - Sample answers with audio and transcript	6 speaking mock tests - Sample answers with audio and transcript	6 speaking mock tests (3x 1 hour) - 1 to 1 LIVE classes with your personal tutor - Sample answers with audio and transcript
2 writing mock tests - Sample letters - Detailed examples of student feedback	6 writing mock tests - Sample letters - Detailed examples of student feedback	6 writing mock tests - 1 to 1 detailed personal feedback from your tutor - Marked to official marking criteria - Sample letters
		Pre-test strategy session - 1 to 1
		Contact with an expert personal tutor throughout your course
£95	£295	£600

OET (Occupational English Test) Online Exam Preparation Packages

OET Online: Writing

Lessons

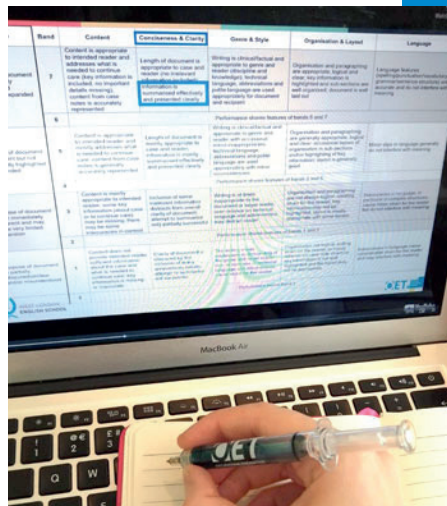
In your lessons, you will learn about each sub-test of the exam and you are given practice, strategies, techniques and language to help you succeed.

Writing feedback

You will receive brand new case notes. When you send us your letter, you will be given feedback, extra language and a full break down of your marks on the writing criteria.

Materials

We use our own materials, all created by our OET team who are Premium Preparation Providers. That means all lessons and role-plays are new.



OET Online Writing

11x video lessons

Language and grammar
for writing

5 new tests with
detailed feedback

£250

OET Online Writing Correction Service

- **Step 1:**
Receive Case Notes
- **Step 2:**
Write your letter
- **Step 3:**
Send us your letter
- **Step 4:**
Receive detailed feedback

Fees

£35 per letter

£160 - 5 letter

£300 - 10 letters

OET (Occupational English Test) Online Exam Preparation Packages

OET Online: Speaking

Lessons

In your lessons, you will learn about the speaking sub-test of the OET. You are given techniques to help you organize your role-play and the language you need to succeed in any situation, such as giving advice and dealing with difficult patients.

Speaking feedback

You will receive brand new role-play cards. The lessons take place on our video platform. In each 45-minute lesson you will practice 1 full paper, which is 2 practice tasks. You will receive verbal feedback on the spot and written feedback via our online platform. You will also receive 1 sample answer of your role-play.

Materials

We use our own materials, all created by our OET team who are **Premium Preparation Providers**. That means all lessons and role-plays are new.

CANDIDATE CARD NO. 1 **MEDICINE**

SETTING Suburban Clinic

DOCTOR Your patient is a 49-year-old accountant, diagnosed six months ago with rheumatoid arthritis (RA). The symptoms of joint pain and fatigue have been well-managed with NSAIDs (nonsteroidal anti-inflammatory drugs), but one week ago, he/she experienced a 'flare' (period when joints are more inflamed and painful). The patient smokes 10 cigarettes per day. He/she is seeking your advice on the anticipated course of the illness and appropriate management.

TASK

- Explain that RA is a chronic disease, which will not just 'go away' (e.g., no cure, remits and relapses, current flare will probably settle but more quickly with medication, etc.).
- Provide strategies for coping with RA (e.g., rest, sleep, modify diet, sensible exercises – long walks, massage, hot treatment, etc.).
- Provide reassurance – early diagnosis and intervention are important for improving patient outcomes.
- Advise the patient to stop smoking.
- Offer to refer the patient to a rheumatologist for specialist advice and possible cortisone treatment.

WEST LONDON ENGLISH SCHOOL OET Premium Preparation Provider

OET Online Speaking

- 5x video lessons
- 6x new role-plays with a tutor (3 lessons of 45 minutes)

£200

Other OET courses offered include:

- OET Online: Personalised lessons
- OET Online: Reading
- OET Online: Listening
- OET Online: Foundation (for B1 learners)



Please see <https://wles.net/english-courses/occupational-english-test-oet-preparation-online-courses/> for full details

Medical English



If you work in the medical field, or are studying to be a healthcare professional, our Medical English course should benefit you. This course is designed to help you improve your English language skills in a wide variety of medical contexts.

Working in the medical field, you will need to interact with a variety of people, such as patients, families and colleagues and in a variety of contexts, such as explaining conditions, reassuring and delivering results.

Class activities are based around real case scenarios that you will have to deal with in your professional life. They are designed to give you the skills, experience and confidence needed to succeed.

Who is this course for?

The course is for healthcare professionals or university students who would like to improve their English and medical knowledge. Your level must be B1+ before you can join the course.



Medical English Afternoons

	Monday	Tuesday	Wednesday	Thursday	Friday
13.00-15.00 (5-min break)	✓	✓	✓	✓	✓

10 hours per week, 5 days a week

Cambridge Exam Preparation: B2 First, C1 Advanced, C2 Proficiency*



Summary (This course is available face-to-face and online*.) *subject to availability

The Cambridge Exams are right for you if:

- you want to study in higher education e.g. university
- you need a certificate to prove your level of English
- you want to improve your general English level

This course has been designed to fully prepare you for the B2 First, C1 Advanced or C2 Proficiency test to achieve your best possible result. The tests are very similar but, because they are at different levels, we have separate classes. The strategies and techniques you will learn are intended to help you get the score you need in each part of the test.

The five parts of the test are:

- Use of English
- Listening
- Reading
- Speaking
- Writing

Our Academic Team select a coursebook which has a variety of interactive and appropriate preparation materials, past exam papers and a range of homework exercises to give you sufficient practice and confidence in the exam.

Examples of techniques you will learn are:

- Listening techniques such as listening for gist, detail, note-taking and comprehension
- Skimming and scanning texts at high speed
- Writing for a range of formal and informal situations

Key Facts

- Minimum English level: B2
- Minimum age: 16
- Average age: 25-30
- Minimum course length: 1 week
- Start date: any Monday
- Average class size: 5 (maximum 14)

*subject to availability

Cambridge Exam Preparation: B2 First, C1 Advanced, C2 Proficiency*

Course Objectives

- To gain skills and techniques which will help you to pass all parts of the exam
- To increase your vocabulary for a range of situations to help with speaking and writing
- To improve and develop your speaking fluency, accuracy, pronunciation and confidence to succeed in the exam
- To develop and practise English grammar and gain confidence when using it in writing and in speaking
- To learn self-study techniques to help you study independently outside the classroom

Included in your fees:

- Regular test practice that reflects the real-life exam atmosphere
- A coursebook and workbook (for an additional reduced fee of £20)
- Outside the classroom you can use our e-learning platform for extra practice. This starts from your enrolment date and runs for your entire course, plus 3 months after you leave us

Afternoon Exam Preparation Timetable

	Monday	Tuesday	Wednesday	Thursday	Friday
12.30 - 15.30 (15-min break)	✓		✓		✓

3 hours per day, 3 days a week

Evening Exam Preparation Timetable

	Monday	Tuesday	Wednesday	Thursday	Friday
19.00 - 21.00 (5-min break)		✓		✓	

2 hours per day, 2 days per week

**subject to availability*

Business English



Summary *(This course is available face-to-face and online*.)* *subject to availability

Communicating effectively in the workplace can be a challenge, which is why our Business English course has been specifically designed to help you interact with clients and colleagues successfully and professionally while using and understanding business vocabulary.

The classes are for anyone that wants to improve their knowledge in business skills as well as gain more confidence in workplace situations such as giving presentations, negotiating and attending meetings. If you want to learn more about the business world to help you succeed at work, this is the course for you.

As the maximum size of the class is 6, the teacher designs the lessons specifically around the precise needs of the group. The class is based on a communicative approach, incorporating grammar, vocabulary and pronunciation into speaking, listening, writing and reading.

Key Facts

- Minimum English level: B2
- Minimum age: 18
- Average age: 25-40
- Minimum course length: 1 week
- Start date: any Saturday
- Average class size: 5 (maximum 6)

*subject to availability

Businss English

	Monday to Friday	Saturday
10:00-13:15 (15-min break)		✓

3 hours per day, 1 day a week

Business English

Course Objectives

- To increase your confidence and fluency when communicating
- To help you understand and respond to real-life situations
- To help you modify your language for different levels of formality and work situations
- To learn techniques and skills in topics such as negotiating, presentation giving, telephone communication, interviews, meetings, networking and written communication
- To improve, develop and practise English grammar and gain confidence when using it in writing and in speaking

Included in your fees:

- A needs analysis to ensure your teacher knows what you want and need
- Regular progress exercises and progress reports
- Outside the classroom you can use our e-learning platform for extra practice. This starts from your enrolment date and runs for your entire course, plus 3 months after you leave us
- Stimulating resources including authentic materials such as journals, videos and podcasts to help develop your skills for all your business needs
- A certificate of completion



English Conversation class

We know that when speaking another language, it is important to be understood and to sound as natural and fluent as possible. Our conversation classes are designed to help you achieve this with a focus on accuracy, fluency and pronunciation whilst also increasing your vocabulary.

The classes are for anyone who wants to improve their speaking and communication skills. The classes focus on a mix of social and professional situations.

Topics include practical skills like preparing for an interview, how to agree and disagree, giving and responding to opinions, being discrete, idioms, informal everyday language, practicing pronunciation, making suggestions and negotiating.

We also have an Online conversation club where you can chat with other English speakers from all over the world.

Trinity exam classes

We fully prepare you for the Trinity exams so that you can achieve your target score. Our teachers design the classes to provide you with the essential preparation and practice you need to succeed, with exam strategies and techniques to help you pass each part of the test.

There are different Trinity exams you can take, all of which we can help you fully prepare for, so you can go into the exam with confidence. To see which exam you need, check below.

The A1 SELT – GESE Grade 2 is right for you if:

- you need to pass a Secure English Language Test (SELT) for **Further Leave to Remain**.

⋮ This is a 6-minute speaking and listening test. You will get your result on the day and your certificate within 7 days.

The A2 SELT – GESE Grade 3 is right for you if:

- you need to pass a Secure English Language Test (SELT) for **Further Leave to Remain (visa extension)**.

⋮ This is a 7-minute speaking and listening test. You will get your result on the day and your certificate within 7 days.

The B1 SELT – GESE Grade 5 is right for you if:

- you need to pass a Secure English Language Test (SELT) for **Indefinite Leave to Remain (to settle)** or **British Citizenship**

⋮ This is a 10-minute speaking and listening test. You will get your result on the day and your certificate within 7 days.

The B1 SELT – ISE I is right for you if:

- you need to pass a Secure English Language Test (SELT) for a **Skill worker visa** or **Student visa**

⋮ This test lasts 1 day and tests reading, writing, speaking and listening. You will get your certificate within 21 days.

The B2 SELT – ISE II is right for you if:

- you need to pass a Secure English Language Test (SELT) for a **Skill worker visa**, **Student visa**, an **Innovator visa** or **Start-up visa**.

⋮ This test lasts 1 day and tests reading, writing, speaking and listening. You will get your certificate within 21 days.

Private tuition



If you want a course designed exactly around what you need and want, private tuition may be right for you.

Maybe you would like extra help with General English, pronunciation, a specific exam or a job interview. Private tuition is so specific that you can work on any skills you need. The topics and skills covered in the lesson can be decided by you or suggested by your teacher.

Based on your needs and wants, your teacher will design a course plan with you to develop a personal program to develop the exact skills you need, at a pace appropriate to you.

There are two options for private tuition:

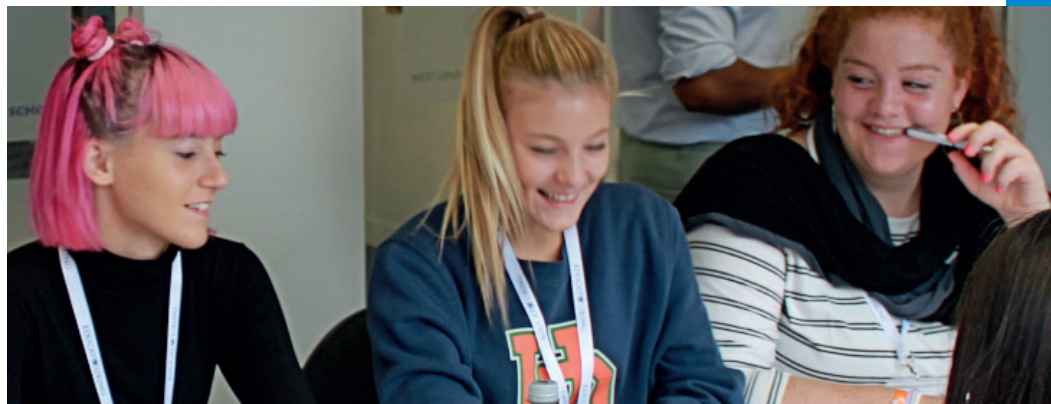
1 to 1 lessons:
A class with just you and the teacher. Open to any level of English.

Small group:
A class with you and up to 3 other students. Open to any level of English but you must all be a similar level with a similar goal (e.g. to pass the IELTS exam).

Number of students	Rate per hour
1 to 1	£65
2 to 1	£45
Small Group	£25

For 1 to 1 lessons, if you book more than 10 hours, the price will be £60 per hour.

Saturday Junior School



Our Saturday Junior school is open to young learners who wish to improve their English language skills while having fun.

Whether you have just moved to the UK or you are here for a holiday and want your children to learn English, advance their current language knowledge, boost their confidence, or just polish their existing language skills, this is the class for you.

The syllabus has been developed to allow students to use their current language skills, imagination and creativity through project work, class discussions and fun activities in our innovative lessons tailored to the needs and interest of teenagers.

Students will learn and practise new language in a dynamic way through music, video, visuals and technology. It is also the perfect opportunity to make international friends. This course is available face-to-face and online.



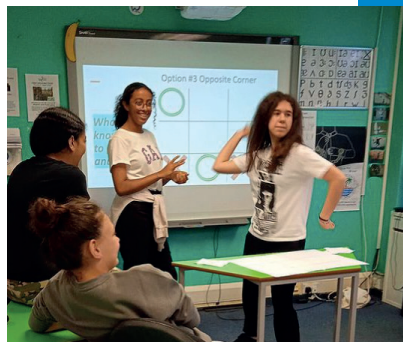
Key Facts

- Age 12-16 years old
- Class size Average 4, maximum 8
- Levels A1-C2*
- Times 11.00-13.00
- Start date: Any Saturday

**subject to availability*



Junior Summer School



Our Junior Programme is an action-packed learning adventure for young learners, which gives them the best chance to have fun and learn during their time in London.

This course is a perfect combination of communicative English lessons with cultural activities and excursions to create an exciting and unforgettable summer by experiencing British life.

The lessons are especially tailored to suit the needs and interests of teenagers with focus on creativity, fun and collaboration. Whether they are interested in science, technology, sports, music or art, our students can enjoy a topic-based syllabus through engaging in project-based activities that emphasise communication and core skills (Speaking, Writing, Reading and Listening) while expanding their vocabulary and grammar knowledge.

The programme has been developed to allow students to use their current language skills, imagination and creativity in project work, class discussions and fun activities. Students will learn and practise new language in a dynamic way through music, video, visuals and technology. Our Junior Programme is a great opportunity to make new friends with peers from around the world. Individuals as well as groups are welcome

Ealing: the best area to study and explore

Ealing is the perfect place for international students. It is easy to get around, with lots to see and do. For instance, we have a large shopping centre and a huge park just behind our school!

WLES is only 30 minutes from Central London; rich in history, culture, sport, music and with an exciting international atmosphere.



- Key Facts**
- Age 12-17 years old
 - Class size Average 8, maximum 15
 - Levels A1-C2*
 - Times 09.00-12.00
 - Start date: Any Monday in July and August
- *subject to availability*

Junior Summer School

Course Objectives

- To develop and improve communication skills, especially fluency and pronunciation
- To practise listening skills to help understand and respond to real-life situations
- To build confidence when using English
- Nurture creativity and imagination
- To increase vocabulary in a wide range of topics such as holidays, sport, technology, nature, food and drink, transport etc.
- To improve, develop and practise English grammar and gain confidence when using it in writing and in speaking
- To develop reading and writing skills for everyday use
- To learn self-study techniques to develop continuous improvement and love of English

Included in your fees:

- 15 hours of General English per week (3 hours each morning)
- 5 afternoon trips per week (depending on the course you choose)
- Optional excursions available at weekends
- All course materials
- A language placement test
- A certificate of completion
- Access to Wi-Fi
- Safeguarding and monitoring
- A Group Leader (if you don't already have one)
- Access to our e-learning system. This starts from your enrolment date and runs for your entire course, plus 3 months after you leave us.
- A certificate of completion



STEM



Overview *(This course is available face-to-face and online*.)* *subject to availability

Let your children learn while they are busy having fun on our STEM courses.

Students learn STEM (Science, Technology, Engineering and Maths) concepts through innovative and interactive lessons while having fun. Our course features weekly 15 hours of STEM classes and project work. The course is designed to help students improve their English while enhancing their knowledge of science and technology through theoretical and practical STEM lessons and project work.

Students can extend their English vocabulary, particularly in STEM subjects while they develop critical thinking and study skills, improve their active listening and spoken English skills as well as make new friends from around the world. In the afternoons students can discover London by taking part in the many fun and exciting activities we offer via our Junior Social Programme ([link](#)).

Key Facts

- Age 12-17 years old
- Class size: Average 4, maximum 8
- Levels A1-C2*
- Times 13.30-15.30
- Start date:
Any Monday in July and August

*subject to availability

Junior social programme

Join our Junior Social Programme to experience the real London by visiting traditional sights as well as hidden gems off the beaten track.

Discover all the cool things to do in the capital with our fun, unique, Insta-worthy excursions. Our learners' language development extends from the classroom to these diverse outings, as students are always accompanied by one of our teachers who all have extensive knowledge of their home town, London.

Junior Social Programme Timetable

	Monday	Tuesday	Wednesday	Thursday	Friday	Weekend
WEEK 1	Walking tour of Buckingham Palace + St James's Park + Westminster Abbey	Covent Garden	Shakespeare's Globe Theatre + Tate Modern + Millenium Bridge + St Paul's Cathedral	Street art tour - East London	Oxford Street + Apple Store + Hamleys and Carnaby St	Jack the Ripper Tour
WEEK 2	Walking tour of Westminster (Parliament, Big Ben, Westminster abbey) + Southbank	The Old Bailey	The V&A Create! Young People's events	Sky Garden	Camden Market + Camden Stables + Abbey Road	Ghost bus tour
WEEK 3	Walking tour of the Tower of London, Tower Bridge and the Monument	Emirates Airline Cable Car + Greenwich	Science Museum	The London Bridge Experience + Borough Market	Spitfields Market	Queen Elizabeth Olympic Park Slide
WEEK 1	Walking tour of Piccadilly Circus + Leicester Square + M&M's shop + Trafalgar Square + Lego Shop	Young Creatives at the Roundhouse	Natural History Museum	London Dungeon	Notting Hill and Portobello Market	National Theatre:

*subject to change

Other options include:

Regent's Park, London Zoo, Primrose Hill, Harry Potter Tour, King's Cross/St Pancras, Go Karting, Mme Tussaud's, Sherlock Holmes Museum, Escape Room, Cinema, Westminster Abbey, Westfield Shopping Centre.

Key Facts

- Age: 12-17 years old
- Student to adult ratio: 8:1
- Times 1-5pm

*subject to availability



Level Descriptors

West London English School level	Common European Framework (CEFR)	CEFR Summary	IELTS Level
Beginner / Elementary	A1 - Breakthrough	A basic ability to communicate and exchange information in a simple way. <i>Example: CAN ask simple questions about a menu and understand simple answers.</i>	
Pre-Intermediate	A2 Waystage	An ability to deal with simple, straightforward information and begin to express yourself in familiar contexts. <i>Example: CAN take part in a routine conversation on simple predictable topics.</i>	
Intermediate	B1 Threshold	The ability to express yourself in a limited way in familiar situations and to deal in a general way with non-routine information. <i>Example: CAN ask to open an account at a bank, provided that the procedure is straightforward.</i>	4.0-5.0
Intermediate to Upper-Intermediate	B1+ Threshold	The ability to express oneself in a controlled way in familiar situations and to deal in a general way with unfamiliar information. <i>Example: CAN ask to open an account at a bank, provided that the procedure is straightforward.</i>	4.0-5.5
Upper-Intermediate	B2 Vantage	The capacity to achieve most goals and express yourself on a range of topics. <i>Example: CAN show visitors around and give a detailed description of a place.</i>	5.0-6.5
Advanced	C1 Effective Operational Proficiency	The ability to communicate with the emphasis on how well it is done, in terms of appropriacy, sensitivity and the capacity to deal with unfamiliar topics. <i>Example: CAN deal with hostile questioning confidently. CAN get and hold onto his/her turn to speak.</i>	6.5-8.0
Proficiency	C2 Mastery	The capacity to deal with material which is academic or cognitively demanding, and to use language to good effect at a level of performance which may in certain respects be more advanced than that of an average native speaker. <i>Example: CAN scan texts for relevant information, and grasp main topic of text, reading almost as quickly as a native speaker.</i>	8.0-9.0

Welfare



At West London English School, we prioritise the safeguarding of our students, both inside and outside of the classroom, and we take pride in our caring and supportive environment. The student is at the heart of everything we do and we want our students to feel listened to and treated as individuals. We have appropriate and efficient welfare systems and it is our first priority to ensure our students and group leaders are safe, happy and comfortable.

On the **junior social programme**, our student-to-staff ratio is on 8:1, with our maximum being 10:1.

Our staff are well-qualified and experienced, and have all been trained in child protection and safeguarding with police suitability checks in place as a condition of their employment.

There is **on-site supervision** for all students from 8.30am-7.30pm. Outside of these hours, all students have access to the **24-hour emergency contact number**. We also have first-aid trained staff on site between 8.30am-7.30pm. We provide details of local doctors' surgeries and the local hospital if more specialist medical attention is required.

From the moment a student arrives, there is always a member of staff they can talk to and a clear point of contact for all welfare issues. As part of their course, usually on the first day, all students under 18 receive a briefing on staying safe whilst at WLES. Under-18 students also have weekly meetings with the **Welfare Officer**, or their group leader if arriving with a group, to ensure any issues are solved as quickly and efficiently as possible.

We strongly recommend that you take out **travel insurance** at the time of booking your trip as cover will begin for pre-departure cancellation from the date accepted for cover. This will, therefore, provide cover if the trip has to be cancelled for an insured reason such as illness or serious accident preventing travel.

Find Out More



Enrolment Procedures

For students who want to study for under 6 months and students living in the UK

You can register for a course in person at the school or by contacting us through our website or email.

To apply, you should:

1. **Take the test** for us to know your level of English, please complete our placement test on our website or in person at the school. This helps academic management know which class is right for you.
2. **Have a free trial class (face-to-face or online)** - After you have done the placement test, you will be given a free trial class to meet the teachers, the other students and to see the quality of our classes.
3. **Enrol** - You can simply book your course on our website and make a payment of course fees.

You will be required to bring the same documents when enrolling in person.

If you have any further questions, please don't hesitate to come in or to send us an email to info@wles.net.

Find Out More

Enrolment Procedures

For students who want to study for longer than 6 months

If you want to study for longer than 6 months, up to a maximum of 11 months, you will need to apply for a Short-term study visa.

To apply, you should:

1. **Take the test** for us to know your level of English, please complete our placement test on our website. This helps academic management know which class is right for you.
2. Complete the application form on our homepage, choose your course and dates of study, and make payment for the required fees;
3. **Start your Visa application**
4. Send the booking confirmation letter we give you to your embassy, together with any other documents they request (this is normally done on the date of appointment given to you on a successful Visa application).
5. Provide us with a copy of your visa, once it has been issued.

If your visa request is refused, you will be entitled to a refund of your course fees, minus an administration fee of £250.

This is a brief description of the whole process but we will guide you and keep in regular contact with you.

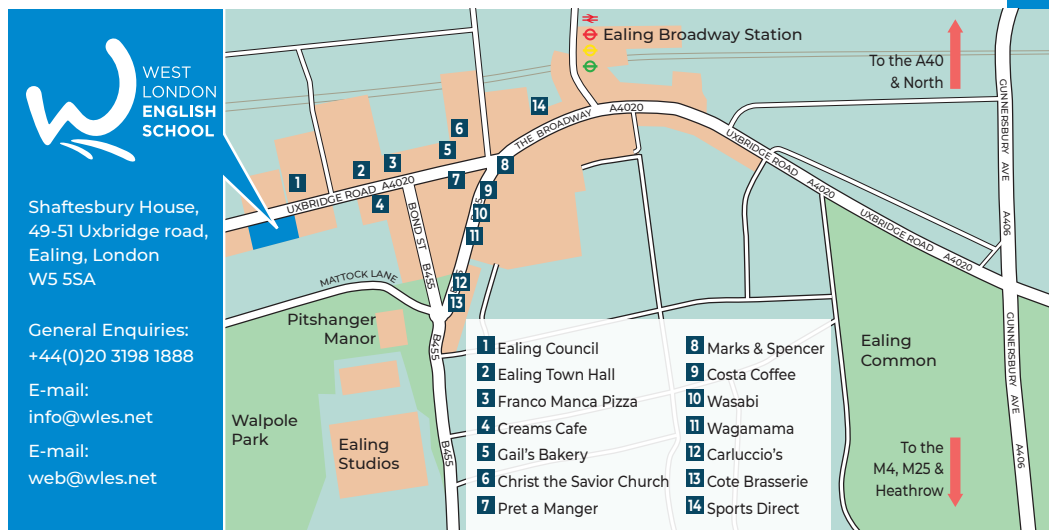
Please visit the <https://www.gov.uk/visa-to-study-english> website for more information on studying in the UK.

Basic T&Cs

- Full payment is required for all bookings. Payment plans are available on request for bookings of 12 weeks or more.
- In the event of cancellation, the student will be entitled to a refund of any outstanding balance after an admin fee of £250 and any fees for lessons provided (as stated on our price lists) have been deducted. If a student cancels part of the way through the week, the full price for the week will be charged.
- Exam preparation courses do not include external examination fees (usually £50-£200). Social programme fees (up to £30 per event) and travel cost are not included.

If you have any further questions, please don't hesitate to come in or to send us an email to info@wles.net.

Getting to WLES



By Plane

There are direct flights to all London airports from all major European cities and from most countries.

Heathrow airport is 23 minutes direct from Ealing Broadway station by train.

London airports: Heathrow (the closest to WLES), Gatwick, Luton, Stansted and London City.

By Train

Our school is just a 10-minute walk from Ealing Broadway station. Ealing Broadway has trains that run every 10 minutes direct to Paddington station in Central London and 23 minutes to Heathrow Airport.

We are also a 10-minute walk away from West Ealing station and 20 minutes from Ealing Common station.

By Tube

Ealing Broadway is on the Central Line, and runs direct to stations such as Notting Hill and Oxford Circus.

It is also on the Circle and District Line to stations such as Earl's Court and Victoria.

By Car or Coach

The major London coach station is Victoria, which is 40 minutes from Ealing Broadway station by tube using the District Line.

You can travel from London by car to all major UK cities such as Bath, Liverpool and Manchester within 4 hours.

Car parks are available in Ealing, near the school.

List of Irregular Verbs

Infinitive	Simple Past	Past Participle
to be	was	been
to become	became	become
to begin	began	begun
to bend	bent	bent
to bite	bit	bitten
to blow	blew	blown
to break	broke	broken
to bring	brought	brought
to build	built	built
to burn	burnt/burned	burnt/burned
to buy	bought	bought
to catch	caught	caught
to choose	chose	chosen
to come	came	come
to cost	cost	cost
to cut	cut	cut
to deal	dealt	dealt
to dig	dug	dug
to do	did	done
to draw	drew	drawn
to dream	dreamt/dreamed	dreamt/dreamed
to drink	drank	drunk
to drive	drove	driven
to eat	ate	eaten
to fall	fell	fallen
to feed	fed	fed
to feel	felt	felt
to fight	fought	fought
to find	found	found
to fly	flew	flown
to forget	forgot	forgotten
to freeze	froze	frozen
to get	got	got
to give	gave	given
to go	went	gone
to grow	grew	grown
to have (got)	had	had
to hear	heard	heard
to hide	hid	hid
to hit	hit	hit
to hold	held	held
to hurt	hurt	hurt
to keep	kept	kept

List of Irregular Verbs

Infinitive	Simple Past	Past Participle
to know	knew	known
to lay	laid	laid
to lead	led	led
to learn	learnt/learned	learnt/learned
to leave	left	left
to let	let	let
to lie	lay	lain
to lose	lost	lost
to make	made	made
to mean	meant	meant
to meet	met	met
to pay	paid	paid
to prove	proved	proved/proven
to put	put	put
to read	read	read
to ride	rode	ridden
to ring	rang	rung
to run	ran	run
to say	said	said
to see	saw	seen
to sell	sold	sold
to send	sent	sent
to shoot	shot	shot
to show	showed	showed/shown
to shut	shut	shut
to sing	sang	sung
to sit	sat	sat
to sleep	slept	slept
to speak	spoke	spoken
to spend	spent	spent
to stand	stood	stood
to steal	stole	stolen
to stick	stuck	stuck
to swear	swore	sworn
to swim	swam	swum
to take	took	taken
to teach	taught	taught
to tell	told	told
to think	thought	thought
to throw	threw	thrown
to understand	understood	understood
to wear	wore	worn
to win	won	won
to write	wrote	written



WEST
LONDON
ENGLISH
SCHOOL

- General English
- Conversation classes
- Business English
- IELTS preparation
- OET preparation
- Cambridge exam preparation
- Trinity exam preparation
- Junior summer school
- Medical English
- Private tuition
- Online English classes

Telephone

+44(0)20 3198 1888

E-mail:

info@wles.net

Shaftesbury House, 49-51 Uxbridge Road, Ealing, London W5 5SA

wles.net